



High Pressure Technology • Testing Equipment
Hydraulics • Pneumatics

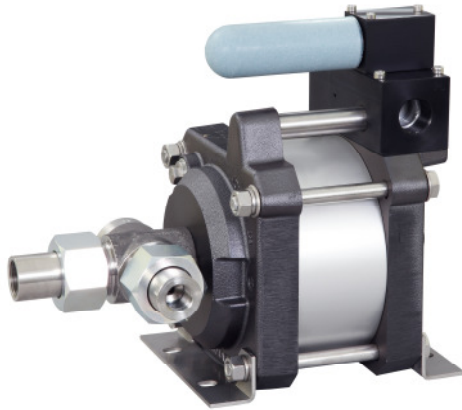
Technical Data Sheet

G400 (L)

» Oil service

G400 (L) VE

» Water service



G400 (L)
single acting, single air drive head, side inlet
(Standard= Bottom inlet, see dimension drawing)

Technical Data:

Air drive pressure: 1-10 bar / 14,5 - 145psi

Calculated Outlet Pressure at an air drive of 10 bar/145 psi: 4000 bar/ 58,000 psi

Pressure ratio: 1:398

Displacement volume/double stroke 2.5 cm³/ 0.15 cu.inch

Connections:

Inlet: Standard: Bottom Inlet 1/2 BSP

Outlet: 9/16-18UNF

Air drive: 3/4 BSP

Maximum operating temperature: 60°C

Net weight: 13.5 kg

Pressure and flow performances, please see enclosed graph.

Wetted materials of construction:

Seal package: G400(L): Polyurethan, NBR
G400(L)VE: UHMWPE, FKM

Pump Body: 1.4313

Piston: 1.4112 (hardened)

Fittings: 1.4122

Approximate Dimensions:

Height: 300 mm

Depth: 193.5 mm

Width: 272 mm

Available Options:

Seal material for oil service: G400 (L)

Seal material for water service: G400(L)VE

Side inlet G400(L)S/ G400(L)VES

Special inlet and outlet ports, i.e. NPT G400(L)-NPT

G400(L)VE-NPT

Special seal material to handle special fluids on request.

Available Accessories:

Air control units with filter pressure regulator, control pressure gauge and shut off valve: G400(L) with C2

To protect the pump against excessive outlet pressures or to limit the outlet pressure, a safety valve can be fitted to the air control unit in the air drive line: G400(L) with C2/SVair (The required outlet pressure has to be indicated.)

Please consult factory for more information. All technical and dimensional information subject to change. All General Terms and Conditions of sale, including limitations of our liability, apply to all products and services sold.

Leistungsdiagramm/Performance Graph G 400

Prüfflüssigkeit/Test Liquid: Wasser-Öl-Emulsion/Water Oil Emulsion ca. 1 - 10 cst

