

GPD260  
double acting, single air drive head

### Technical Data:

Air drive pressure:	1-10 bar / 14,5 - 145psi
Calculated Outlet Pressure at an air drive of 10 bar/145 psi:	2770 bar/ 40165 psi
Pressure ratio:	1: 277
Displacement volume/double stroke	48 cm <sup>3</sup> / 2,9 cu.inch

### Connections:

Inlet:	BSP 1/4"
Outlet:	3/4"-16UNF (6HF)
Air drive:	BSP 1"
Maximum operating temperature:	60°C
Net weight:	58 kg

Pressure and flow performances, please see enclosed graph.



Pumps of the GPD Series that are marked with an EX sign and are supplied with a declaration of conformity as defined in 94/9/EC may be used in areas subject to explosion hazards. They are in conformity to Group II Category 2G Explosion group IIB constructive safety.

### Wetted materials of construction:

Seal package:	GPD 260: UHMWPE, FKM
Pump Body:	1.4571
Piston:	1.4301 (coated)
Fittings:	17-4 PH

### Approximate Dimensions:

Height:	415 mm
Depth:	315 mm
Width:	710 mm

### Available Options:

Inlet and Outlet piping to one common inlet and one common outlet port

### Available Accessories:

Air control units with filter pressure regulator, control pressure gauge and shut off valve:	GPD260 with C2
To protect the pump against excessive outlet pressures or to limit the outlet pressure, a safety valve can be fitted to the air control unit in the air drive line:	GPD260 with C2/SVair (The required outlet pressure has to be indicated.)

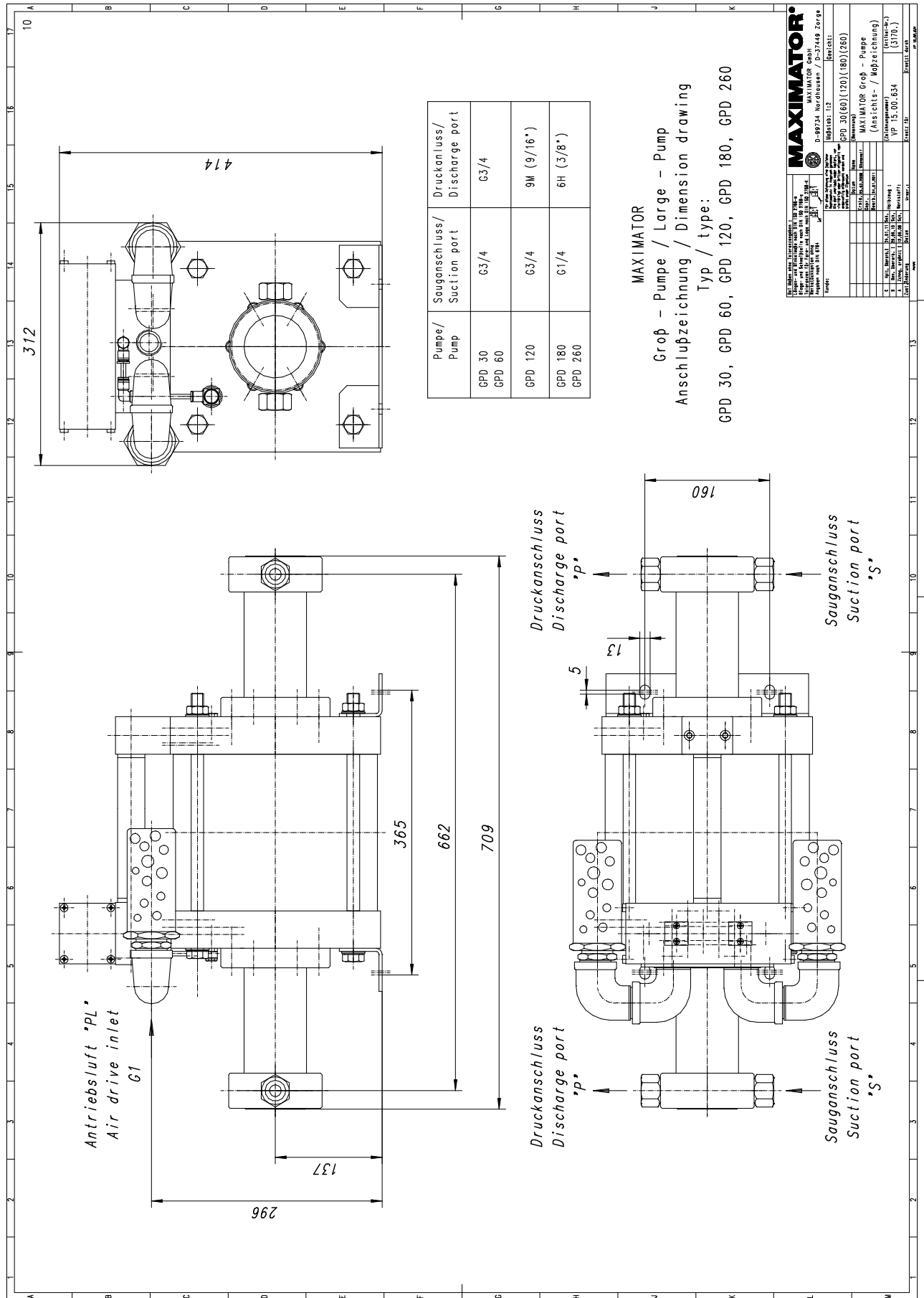
**Please consult factory for more information.** All technical and dimensional information subject to change. All General Terms and Conditions of sale, including limitations of our liability, apply to all products and services sold.

# MAXIMATOR®

## Maximum Pressure.

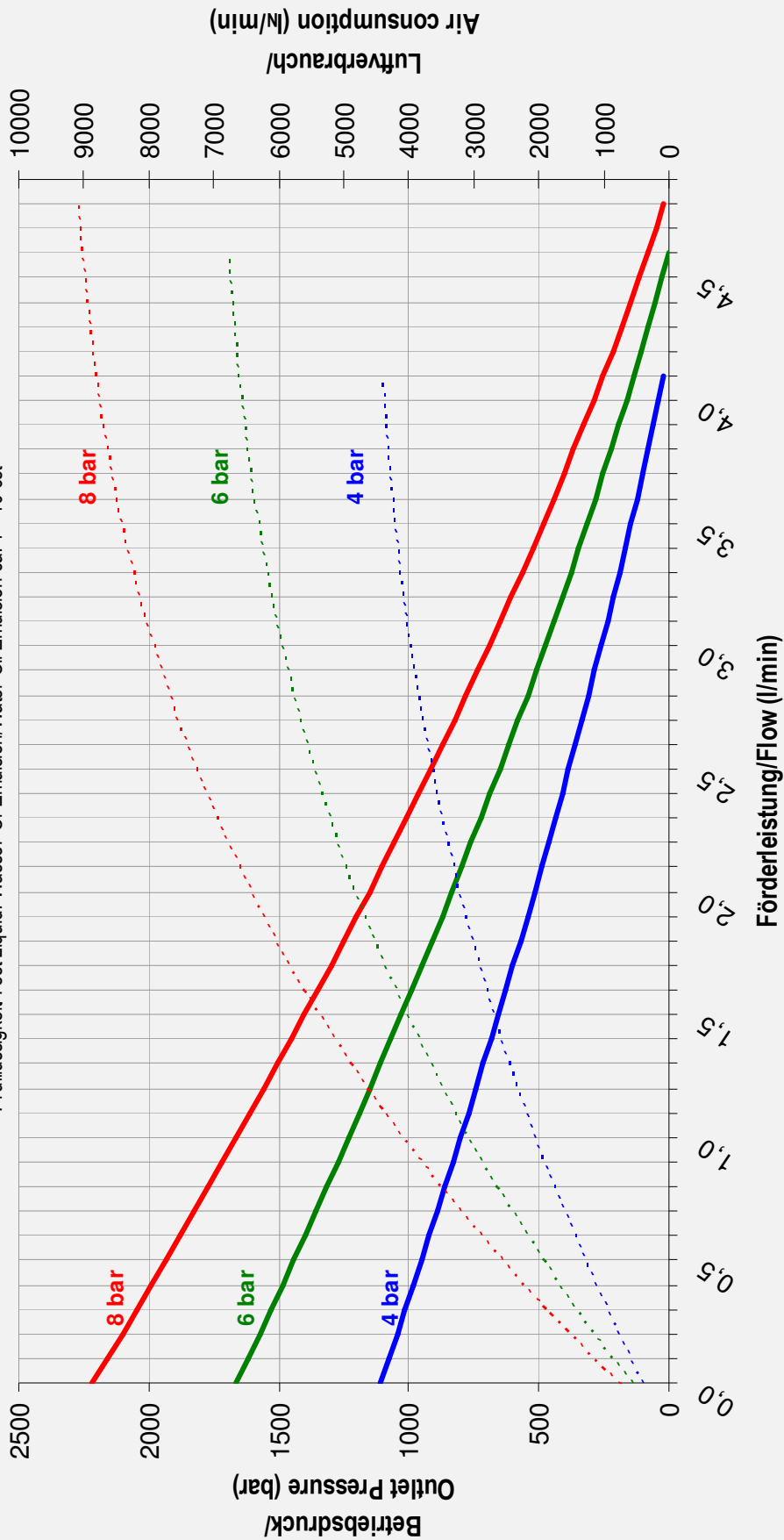


High Pressure Technology • Testing Equipment  
Hydraulics • Pneumatics



### Leistungsdiagramm/Performance Graph GPD 260

Prüfflüssigkeit/Test Liquid: Wasser-Öl-Emulsion/Water Oil Emulsion ca. 1 - 10 cst



- Betriebsdruck bei/Outlet Pressure at 4 bar
- Betriebsdruck bei/Outlet Pressure at 6 bar
- Betriebsdruck bei/Outlet Pressure at 8 bar
- - - Luftverbrauch bei/Air consumption at 4 bar
- - - Luftverbrauch bei/Air consumption at 6 bar
- - - Luftverbrauch bei/Air consumption at 8 bar