

High Pressure Technology • Testing Equipment
Hydraulics • Pneumatics

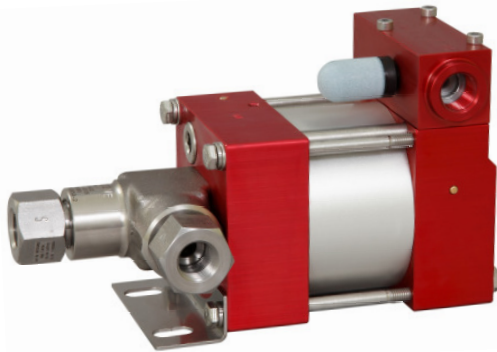
Technical Data Sheet

M111 (L)

» Oil service

M111 (L) VE

» Water service



M111 (L)
single acting, single air drive head
(Standard= Bottom inlet)

Technical Data:

Air drive pressure:	1-10 bar / 14,5 - 145psi
Calculated Outlet Pressure at an air drive of 10 bar/145 psi:	1,300 bar/ 18,850 psi
Pressure ratio:	1:130
Displacement volume/double stroke	1.0 cm ³ / 0.06 cu.inch

Connections:

Inlet:	Standard: Bottom Inlet 3/8 BSP
Outlet:	3/8 BSP
Air drive:	3/8 BSP
Maximum operating temperature:	60°C
Net weight:	2.8 kg

Pressure and flow performances, please see enclosed graph.

Wetted materials of construction:

Seal package:	M111(L): Polyurethan, NBR M111(L)VE: UHMWPE, FKM
Pump Body:	1.4305
Piston:	1.4112 (hardened)
Fittings:	1.4104

Approximate Dimensions:

Height:	195 mm
Depth:	104 mm
Width:	112 mm

Available Options:

Seal material for oil service:	M111(L)
Seal material for water service:	M111(L)VE
Side inlet	M111(L)S/ M111(L)VES
Hand lever/ Spring return	M111-HL (only available with seal package Polyurethane, NBR)
External pilot port modification	M111(L)-DIR
Special inlet and outlet ports, i.e. NPT	M111(L)-NPT M111(L)VE-NPT
Special seal material to handle special fluids on request.	

Available Accessories:

Air control units for M series with filter pressure regulator, control pressure gauge and shut off valve: M111(L) with C1

To protect the pump against excessive outlet pressures or to limit the outlet pressure, a safety valve M111(L) with C1/SVair (The can be fitted to the air control unit in the air drive line: required outlet pressure has to be indicated.)

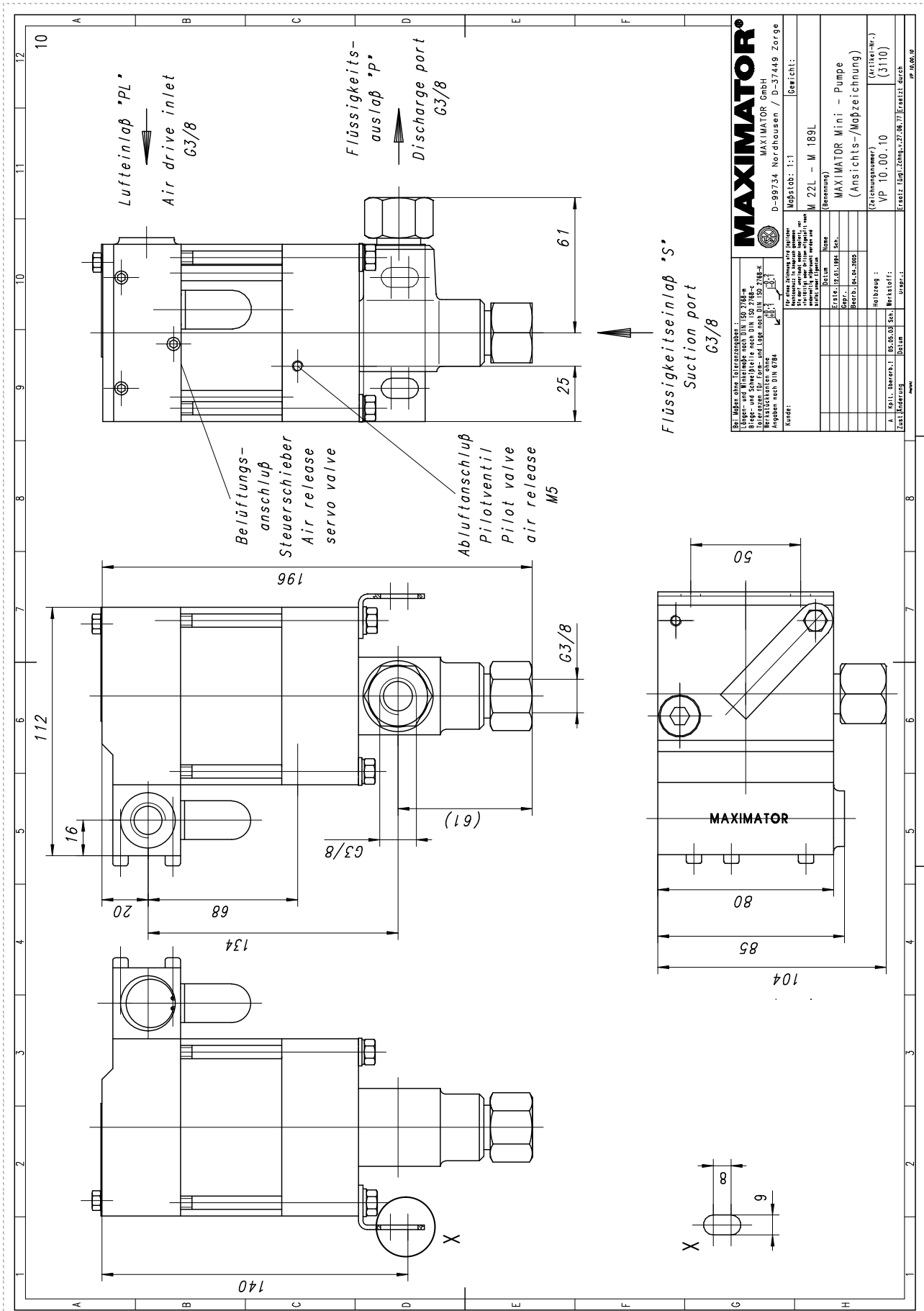
Please consult factory for more information. All technical and dimensional information subject to change. All General Terms and Conditions of sale, including limitations of our liability, apply to all products and services sold.

MAXIMATOR®

Maximum Pressure.

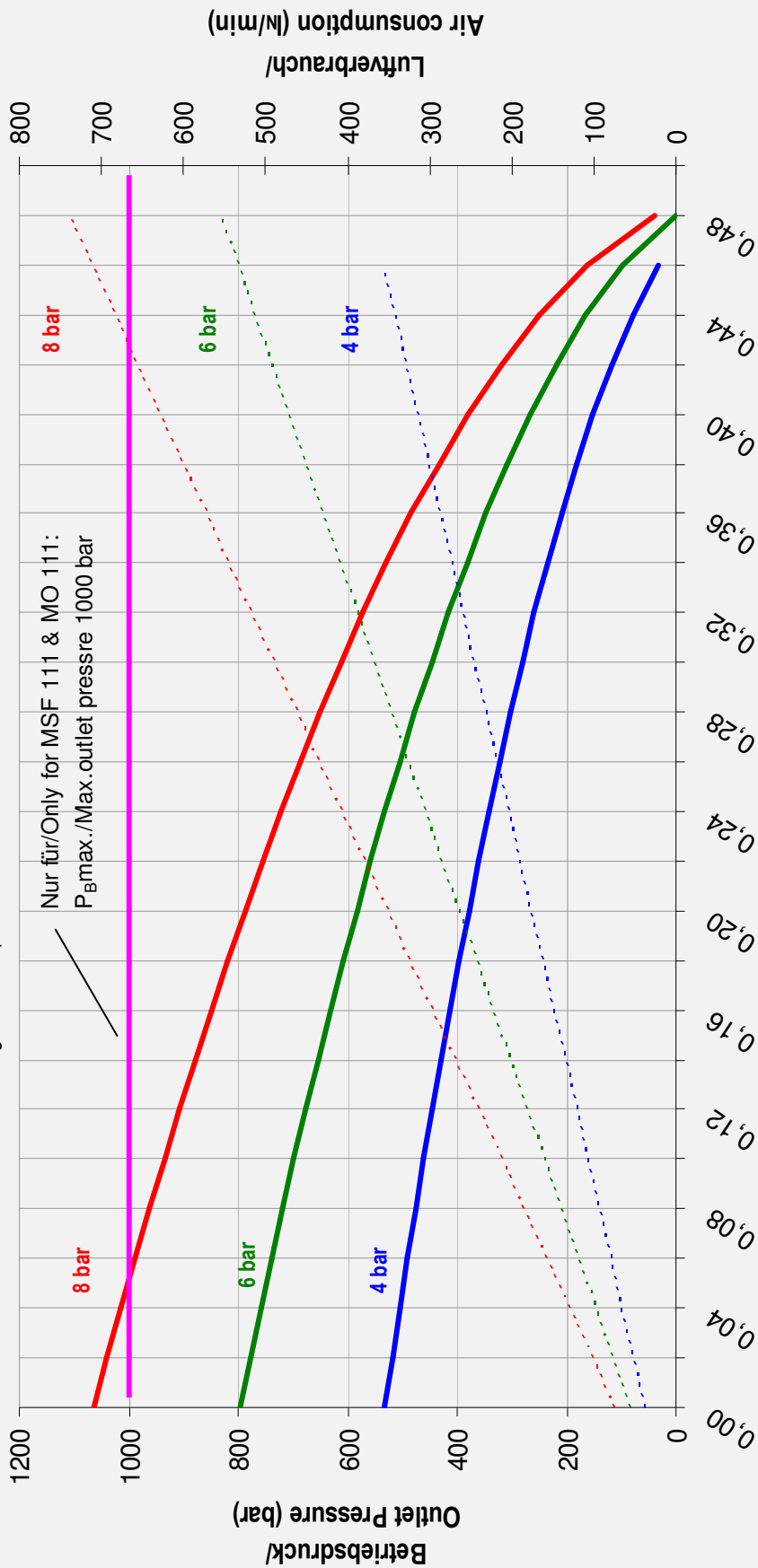


High Pressure Technology • Testing Equipment
Hydraulics • Pneumatics



Leistungsdiagramm/Performance Graph M(O)(SF) 111

Prüfflüssigkeit Test Liquid: Wasser-Öl-Emulsion/Water Oil Emulsion ca. 1 - 10 cst



Förderleistung/Flow (l/min)

- Betriebsdruck bei/Outlet Pressure at 4 bar
- Betriebsdruck bei/Outlet Pressure at 6 bar
- Luftverbrauch bei/Air consumption at 4 bar
- Luftverbrauch bei/Air consumption at 6 bar