

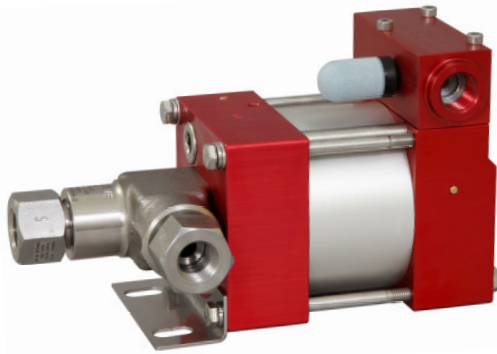
### Technical Data Sheet

M189 (L)

» Oil service

M189 (L) VE

» Water service



M189 (L)  
single acting, single air drive head  
(Standard= Bottom inlet)

#### Technical Data:

Air drive pressure: 1-10 bar / 14,5 - 145psi

Calculated Outlet Pressure at an air drive of 10 bar/145 psi: 2,200 bar/ 31,900 psi

Pressure ratio: 1:220

Displacement volume/double stroke 0.6 cm<sup>3</sup>/ 0.04 cu.inch

#### Connections:

Inlet: Standard: Bottom Inlet 3/8 BSP

Outlet: 3/8 BSP

Air drive: 3/8 BSP

Maximum operating temperature: 60°C

Net weight: 2.8 kg

Pressure and flow performances, please see enclosed graph.

#### Wetted materials of construction:

Seal package: M189(L): Polyurethan, NBR  
M189(L)VE: UHMWPE, FKM

Pump Body: 1.4305

Piston: 1.4112 (hardened)

Fittings: 1.4104

#### Approximate Dimensions:

Height: 195 mm

Depth: 104 mm

Width: 112 mm

#### Available Options:

Seal material for oil service: M189(L)

Seal material for water service: M189(L)VE

Side inlet M189(L)S/ M189(L)VES

Hand lever/ Spring return M189-HL  
(only available with seal package Polyurethane, NBR)

External pilot port modification M189(L)-DIR

Special inlet and outlet ports, i.e. NPT M189(L)-NPT

M189(L)VE-NPT

Special seal material to handle special fluids on request.

#### Available Accessories:

Air control units for M series with filter pressure regulator, control pressure gauge and shut off valve: M189(L) with C1

To protect the pump against excessive outlet pressures or to limit the outlet pressure, a safety valve M189(L) with C1/SVair (The required outlet pressure has to be indicated.) can be fitted to the air control unit in the air drive line:

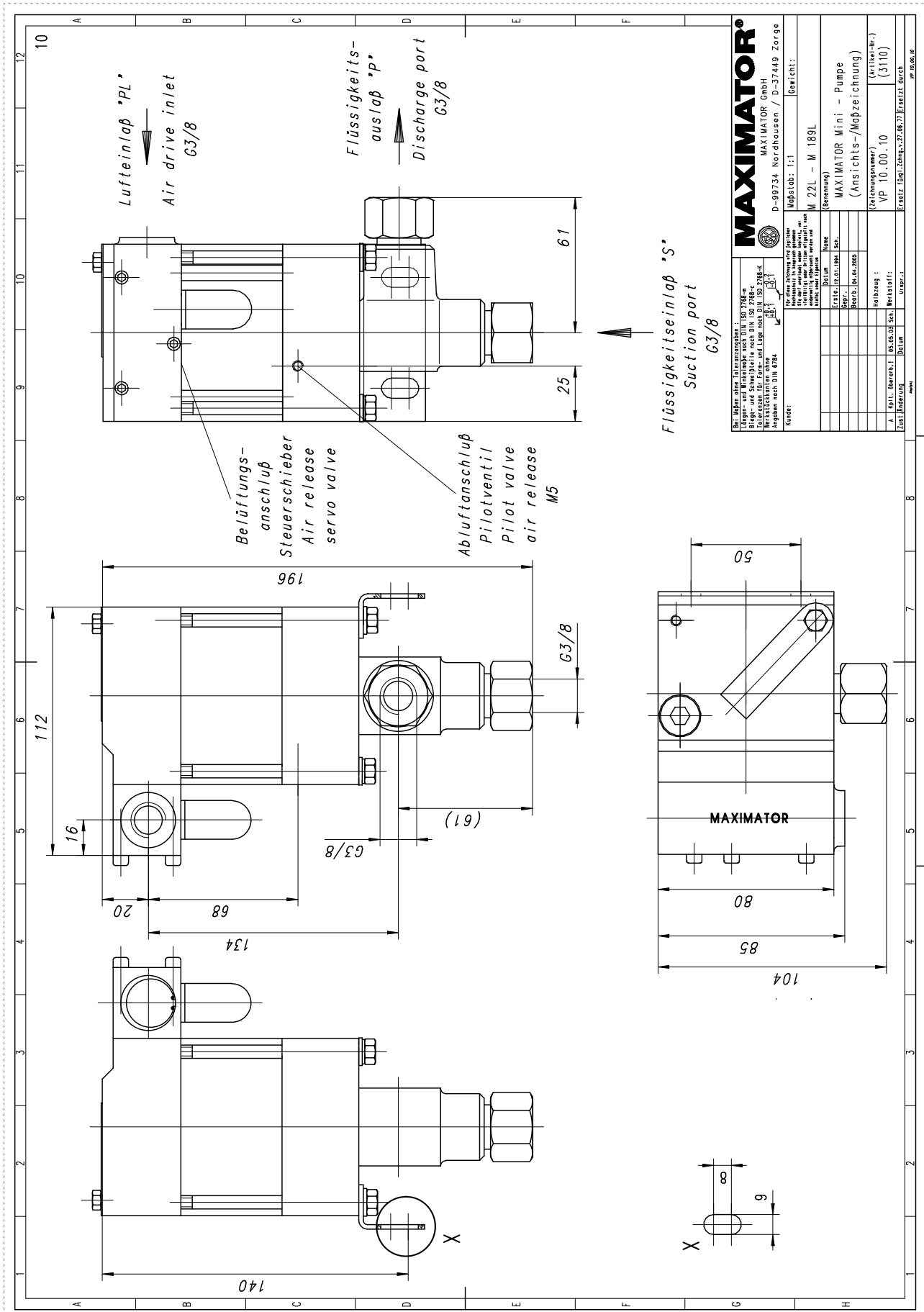
**Please consult factory for more information.** All technical and dimensional information subject to change. All General Terms and Conditions of sale, including limitations of our liability, apply to all products and services sold.

# MAXIMATOR®

## Maximum Pressure.



High Pressure Technology • Testing Equipment  
Hydraulics • Pneumatics





High Pressure Technology • Testing Equipment  
Hydraulics • Pneumatics

### Leistungsdiagramm/Performance Graph M(O) 189

Prüfflüssigkeit/Test Liquid: Wasser-Öl-Emulsion/Water Oil Emulsion ca. 1 - 10 cst

