

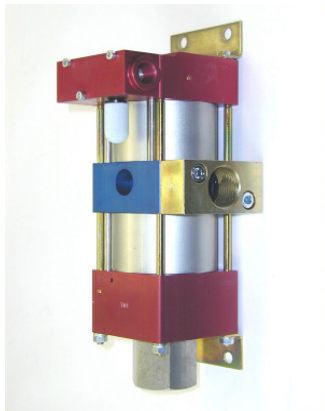


High Pressure Technology • Testing Equipment  
Hydraulics • Pneumatics

### Technical Data Sheet

M1 (L) » Oil service

M1 (L) VE » Water service



M1 (L)  
single acting, single air drive head  
(Standard= Bottom inlet)

#### Technical Data:

Air drive pressure:	1-10 bar / 14,5 - 145psi
Calculated Outlet Pressure at an air drive of 10 bar/145 psi:	10 bar / 142 psi
Pressure ratio:	1:1
Displacement volume/double stroke	122 cm <sup>3</sup> / 7,44 cu.inch

#### Connections:

Inlet:	Standard: Bottom Inlet 1 BSP
Outlet:	1 BSP
Air drive:	3/8 BSP
Maximum operating temperature:	60°C
Net weight:	4,3 kg

Pressure and flow performances, please see enclosed graph.

#### Wetted materials of construction:

Seal package:	M1(L): Polyurethan, NBR M1(L)VE: UHMWPE, FKM
Pump Body:	AlMgSiPB anodized
Piston:	1.4104
Fittings:	Inlet: 1.4305 Outlet: AlMgPbCu anodized

#### Approximate Dimensions:

Height:	280 mm
Depth:	120 mm
Width:	112 mm

#### Available Options:

Seal material for oil service:	M1(L)
Seal material for water service:	M1(L)VE
Special inlet and outlet ports, i.e. NPT	M1(L)-NPT M1(L)VE-NPT
Special seal material to handle special fluids on request.	

#### Available Accessories:

Air control units for M series with filter pressure regulator, control pressure gauge and shut off valve:	M1(L) with C1
To protect the pump against excessive outlet pressures or to limit the outlet pressure, a safety valve can be fitted to the air control unit in the air drive line:	M1(L) with C1/SVair (The required outlet pressure has to be indicated.)

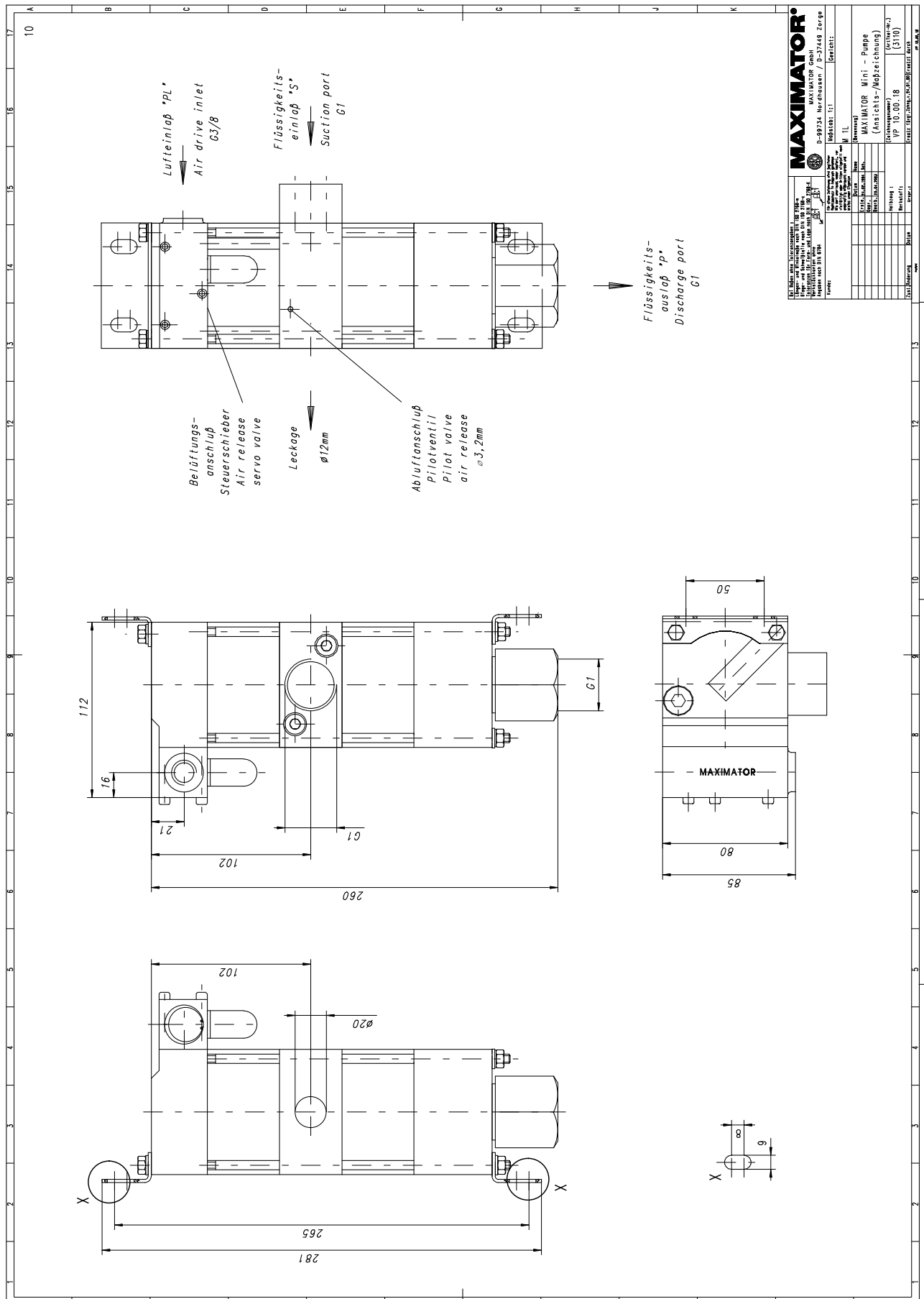
**Please consult factory for more information.** All technical and dimensional information subject to change. All General Terms and Conditions of sale, including limitations of our liability, apply to all products and services sold.

# MAXIMATOR®

## Maximum Pressure.



High Pressure Technology • Testing Equipment  
Hydraulics • Pneumatics



### Leistungsdiagramm/Performance Graph M1L

Prüfflüssigkeit/Test Liquid: Wasser-Öl-Emulsion/Water Oil Emulsion ca. 1 - 10 cst

