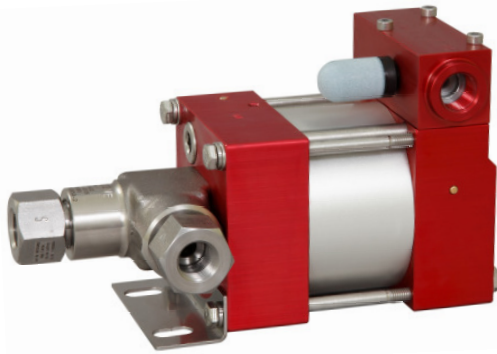


Technical Data Sheet

M22 (L) » Oil service

M22 (L) VE » Water service



M22 (L)
single acting, single air drive head
(Standard= Bottom inlet)

Technical Data:

Air drive pressure: 1-10 bar / 14,5 - 145psi

Calculated Outlet Pressure at an air drive of 10 bar/145 psi: 280 bar/ 4,060 psi

Pressure ratio: 1:28

Displacement volume/double stroke 4.6 cm³/ 0.28 cu.inch

Connections:

Inlet: Standard: Bottom Inlet 3/8 BSP

Outlet: 3/8 BSP

Air drive: 3/8 BSP

Maximum operating temperature: 60°C

Net weight: 2.8 kg

Pressure and flow performances, please see enclosed graph.

Wetted materials of construction:

Seal package: M22(L): Polyurethan, NBR
M22(L)VE: UHMWPE, FKM

Pump Body: 1.4305

Piston: 1.4112 (hardened)

Fittings: 1.4104

Approximate Dimensions:

Height: 195 mm

Depth: 104 mm

Width: 112 mm

Available Options:

Seal material for oil service: M22(L)

Seal material for water service: M22(L)VE

Side inlet M22(L)S/ M22(L)VES

Hand lever/ Spring return M22-HL
(only available with seal package Polyurethane, NBR)

External pilot port modification M22(L)-DIR

Special inlet and outlet ports, i.e. NPT M22(L)-NPT

M22(L)VE-NPT

Special seal material to handle special fluids on request.

Available Accessories:

Air control units for M series with filter pressure regulator, control pressure gauge and shut off valve: M22(L) with C1

To protect the pump against excessive outlet pressures or to limit the outlet pressure, a safety valve M22(L) with C1/SVair (The required outlet pressure has to be indicated.) can be fitted to the air control unit in the air drive line:

Please consult factory for more information. All technical and dimensional information subject to change. All General Terms and Conditions of sale, including limitations of our liability, apply to all products and services sold.

Leistungsdiagramm/Performance Graph M(O)(SF) 22

Prüfflüssigkeit/Test Liquid: Wasser-Öl-Emulsion/Water Oil Emulsion ca. 1 - 10 cst

