

High Pressure Technology • Testing Equipment
Hydraulics • Pneumatics

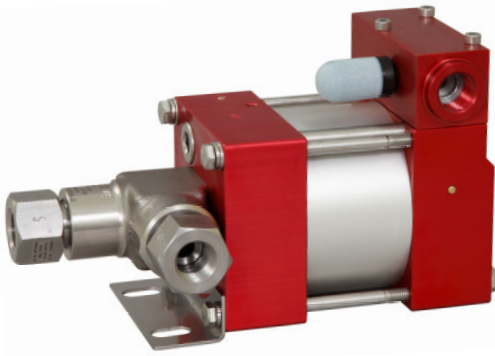
Technical Data Sheet

M37 (L)

» Oil service

M37 (L) VE

» Water service



M37 (L)
single acting, single air drive head
(Standard= Bottom inlet)

Technical Data:

Air drive pressure: 1-10 bar / 14,5 - 145psi

Calculated Outlet Pressure at an air drive of 10 bar/145 psi: 460 bar/ 6,670 psi

Pressure ratio: 1:46

Displacement volume/double stroke 2.8 cm³/ 0.17 cu.inch

Connections:

Inlet: Standard: Bottom Inlet 3/8 BSP

Outlet: 3/8 BSP

Air drive: 3/8 BSP

Maximum operating temperature: 60°C

Net weight: 2.8 kg

Pressure and flow performances, please see enclosed graph.

Wetted materials of construction:

Seal package: M37(L): Polyurethan, NBR
M37(L)VE: UHMWPE, FKM

Pump Body: 1.4305

Piston: 1.4112 (hardened)

Fittings: 1.4104

Approximate Dimensions:

Height: 195 mm

Depth: 104 mm

Width: 112 mm

Available Options:

Seal material for oil service: M37(L)

Seal material for water service: M37(L)VE

Side inlet M37(L)S/ M37(L)VES

Hand lever/ Spring return M37-HL
(only available with seal package Polyurethane, NBR)

External pilot port modification M37(L)-DIR

Special inlet and outlet ports, i.e. NPT M37(L)-NPT

M37(L)VE-NPT

Special seal material to handle special fluids on request.

Available Accessories:

Air control units for M series with filter pressure regulator, control pressure gauge and shut off valve: M37(L) with C1

To protect the pump against excessive outlet pressures or to limit the outlet pressure, a safety valve M37(L) with C1/SVair (The required outlet pressure has to be indicated.) can be fitted to the air control unit in the air drive line:

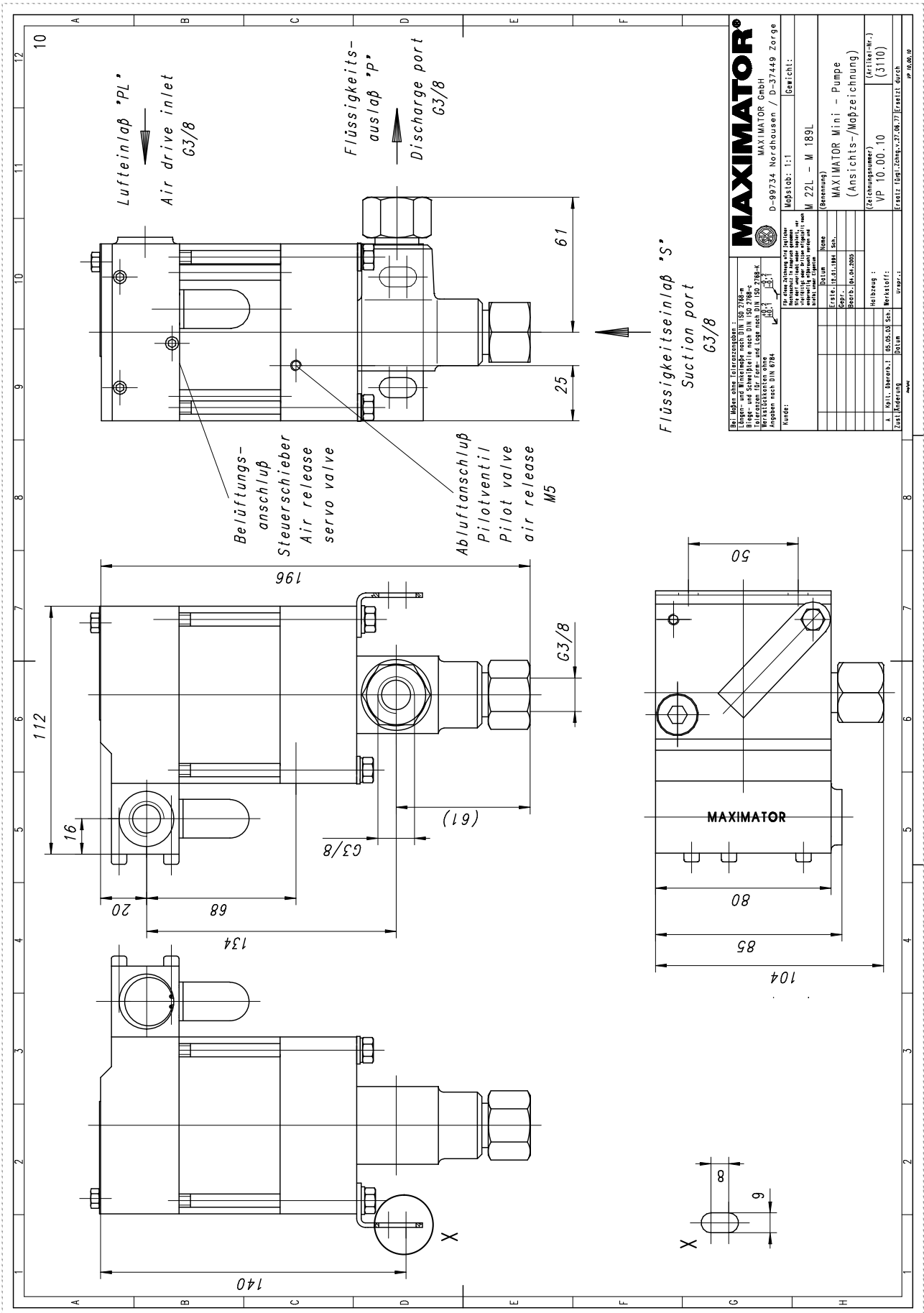
Please consult factory for more information. All technical and dimensional information subject to change. All General Terms and Conditions of sale, including limitations of our liability, apply to all products and services sold.

MAXIMATOR®

Maximum Pressure.



High Pressure Technology • Testing Equipment
Hydraulics • Pneumatics





High Pressure Technology • Testing Equipment
Hydraulics • Pneumatics

Leistungsdiagramm/Performance Graph M(O)(SF) 37

Prüfflüssigkeit/Test Liquid: Wasser-Öl-Emulsion/Water Oil Emulsion ca. 1 - 10 cst

