

High Pressure Technology • Testing Equipment
Hydraulics • Pneumatics

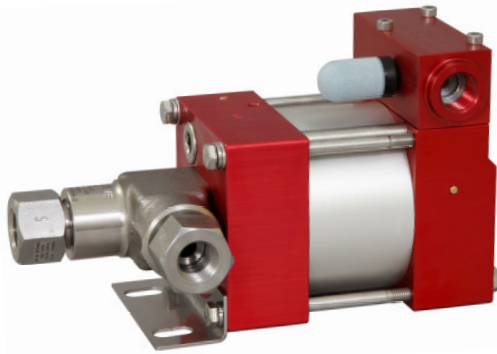
Technical Data Sheet

M72 (L)

» Oil service

M72 (L) VE

» Water service



M72 (L)
single acting, single air drive head
(Standard= Bottom inlet)

Technical Data:

Air drive pressure:	1-10 bar / 14,5 - 145psi
Calculated Outlet Pressure at an air drive of 10 bar/145 psi:	860 bar/ 12,470 psi
Pressure ratio:	1:86
Displacement volume/double stroke	1.5 cm ³ / 0.09 cu.inch

Connections:

Inlet:	Standard: Bottom Inlet 3/8 BSP
Outlet:	3/8 BSP
Air drive:	3/8 BSP
Maximum operating temperature:	60°C
Net weight:	2.8 kg

Pressure and flow performances, please see enclosed graph.

Wetted materials of construction:

Seal package:	M72(L): Polyurethan, NBR M72(L)VE: UHMWPE, FKM
Pump Body:	1.4305
Piston:	1.4112 (hardened)
Fittings:	1.4104

Approximate Dimensions:

Height:	195 mm
Depth:	104 mm
Width:	112 mm

Available Options:

Seal material for oil service:	M72(L)
Seal material for water service:	M72(L)VE
Side inlet	M72(L)S/ M72(L)VES
Hand lever/ Spring return	M72-HL (only available with seal package Polyurethane, NBR)
External pilot port modification	M72(L)-DIR
Special inlet and outlet ports, i.e. NPT	M72(L)-NPT M72(L)VE-NPT
Special seal material to handle special fluids on request.	

Available Accessories:

Air control units for M series with filter pressure regulator, control pressure gauge and shut off valve: M72(L) with C1

To protect the pump against excessive outlet pressures or to limit the outlet pressure, a safety valve M72(L) with C1/SVair (The required outlet pressure has to be indicated.) can be fitted to the air control unit in the air drive line:

Please consult factory for more information. All technical and dimensional information subject to change. All General Terms and Conditions of sale, including limitations of our liability, apply to all products and services sold.

Leistungsdiagramm/Performance Graph M(O)(SF) 72

Prüfflüssigkeit/Test Liquid: Wasser-Öl-Emulsion/Water Oil Emulsion ca. 1 - 10 cst

