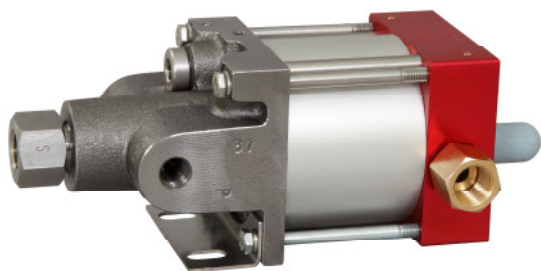


Technical Data Sheet

MO111

» Oil service



MO111
single acting, single air drive head
(Standard= Bottom inlet)

Technical Data:

| | |
|---|------------------------------------|
| Air drive pressure: | 1-10 bar / 14,5 - 145psi |
| Calculated Outlet Pressure at an air drive of 10 bar/145 psi: | 1,000 bar/ 14,504 psi |
| Pressure ratio: | 1:133 |
| Displacement volume/double stroke | 1.0 cm ³ / 0.06 cu.inch |

Connections:

| | |
|--------------------------------|--------------------------------|
| Inlet: | Standard: Bottom Inlet 3/8 BSP |
| Outlet: | 1/4 BSP |
| Air drive: | 3/8 BSP |
| Maximum operating temperature: | 60°C |
| Net weight: | 3.0 kg |

Pressure and flow performances, please see enclosed graph.

Wetted materials of construction:

| | |
|---------------|-------------------|
| Top cap: | Aluminium |
| Air cylinder: | Aluminium |
| Seal package: | Polyurethane, NBR |
| Pump Body: | GGG50 |
| Piston: | 1.4112 (hardened) |

Approximate Dimensions:

| | |
|---------|--------|
| Height: | 195 mm |
| Depth: | 104 mm |
| Width: | 112 mm |

Available Options:

| | |
|--|-----------|
| Side inlet | MO111S |
| External pilot port modification | MO111-DIR |
| Special inlet and outlet ports, i.e. NPT | MO111-NPT |
| Special seal material to handle special fluids on request. | |

Available Accessories:

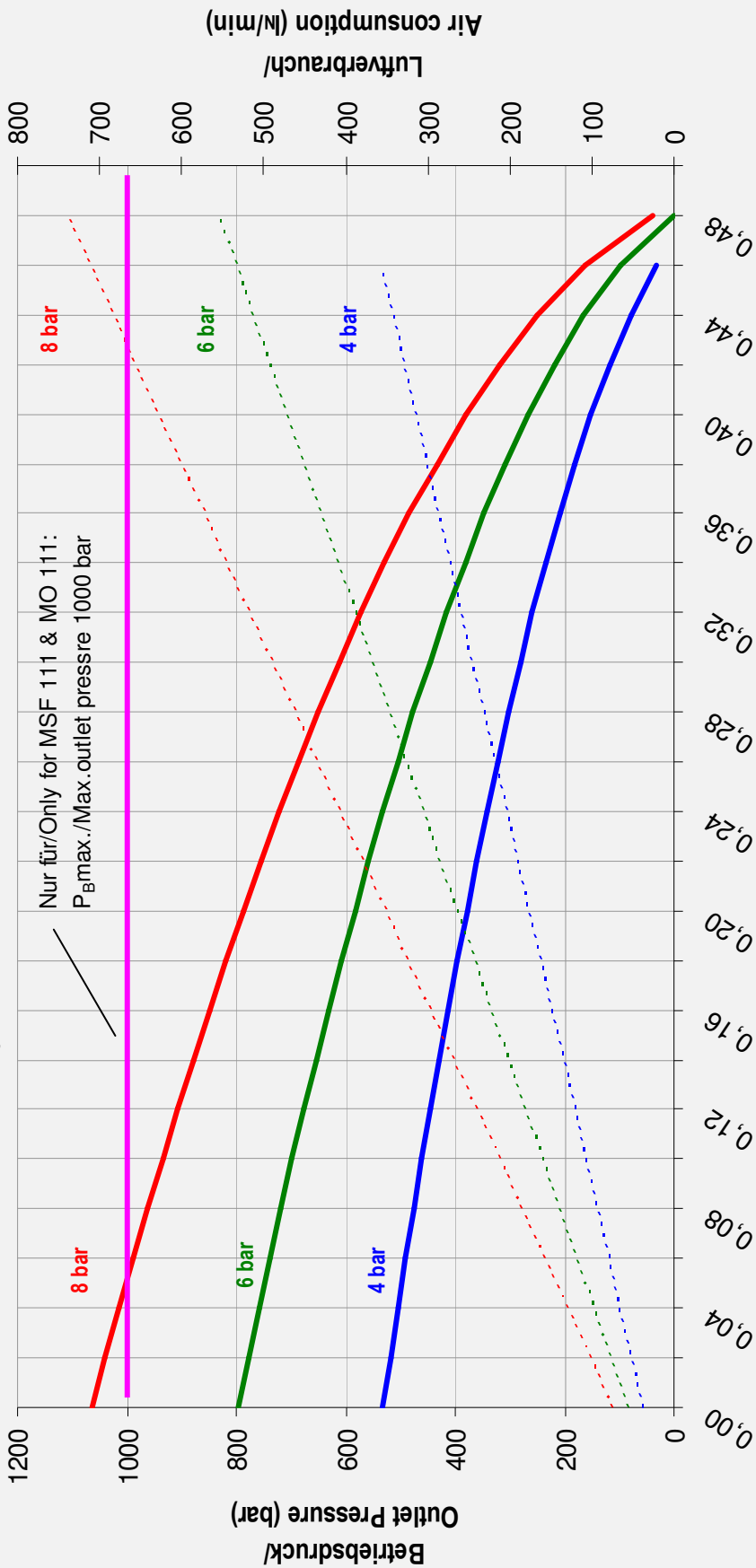
Air control units for M series with filter pressure regulator, control pressure gauge and shut off valve: MO111 with C1

To protect the pump against excessive outlet pressures or to limit the outlet pressure, a safety valve can be fitted to the air control unit in the air drive line: MO111 with C1/SVair (The required outlet pressure has to be indicated.)

Please consult factory for more information. All technical and dimensional information subject to change. All General Terms and Conditions of sale, including limitations of our liability, apply to all products and services sold.

Leistungsdiagramm/Performance Graph M(O)(SF) 111

Prüfflüssigkeit/Test Liquid: Wasser-Öl-Emulsion/Water Oil Emulsion ca. 1 - 10 cst



Förderleistung/Flow (l/min)

- Betriebsdruck bei/Outlet Pressure at 4 bar
- Betriebsdruck bei/Outlet Pressure at 6 bar
- Luftverbrauch bei/Air consumption at 4 bar
- Luftverbrauch bei/Air consumption at 6 bar