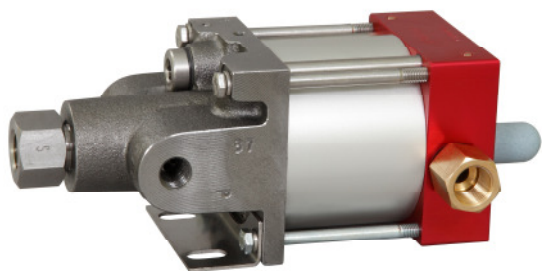


### Technical Data Sheet

MO37

» Oil service



MO37

Single acting, single air drive head  
(Standard= Bottom inlet)

#### Technical Data:

Air drive pressure: 1-10 bar / 14,5 - 145psi

Calculated Outlet Pressure at an air drive of 10 bar/145 psi: 470 bar/ 6,816 psi

Pressure ratio: 1:47

Displacement volume/double stroke 2.8 cm<sup>3</sup>/ 0.17 cu.inch

#### Connections:

Inlet: Standard: Bottom Inlet 3/8 BSP

Outlet: 1/4 BSP

Air drive: 3/8 BSP

Maximum operating temperature: 60°C

Net weight: 3.0 kg

Pressure and flow performances, please see enclosed graph.

#### Wetted materials of construction:

Top cap: Aluminium

Air cylinder: Aluminium

Seal package: Polyurethane, NBR

Pump Body: GGG50

Piston: 1.4112 (hardened)

#### Approximate Dimensions:

Height: 195 mm

Depth: 104 mm

Width: 112 mm

#### Available Options:

Side inlet MO37S

External pilot port modification MO37-DIR

Special inlet and outlet ports, i.e. NPT MO37-NPT

Special seal material to handle special fluids on request.

#### Available Accessories:

Air control units with filter pressure regulator, control pressure gauge and shut off valve: MO37 with C1

To protect the pump against excessive outlet pressures or to limit the outlet pressure, a safety valve can be fitted to the air control unit in the air drive line: MO37 with C1/SVair (The required outlet pressure has to be indicated.)

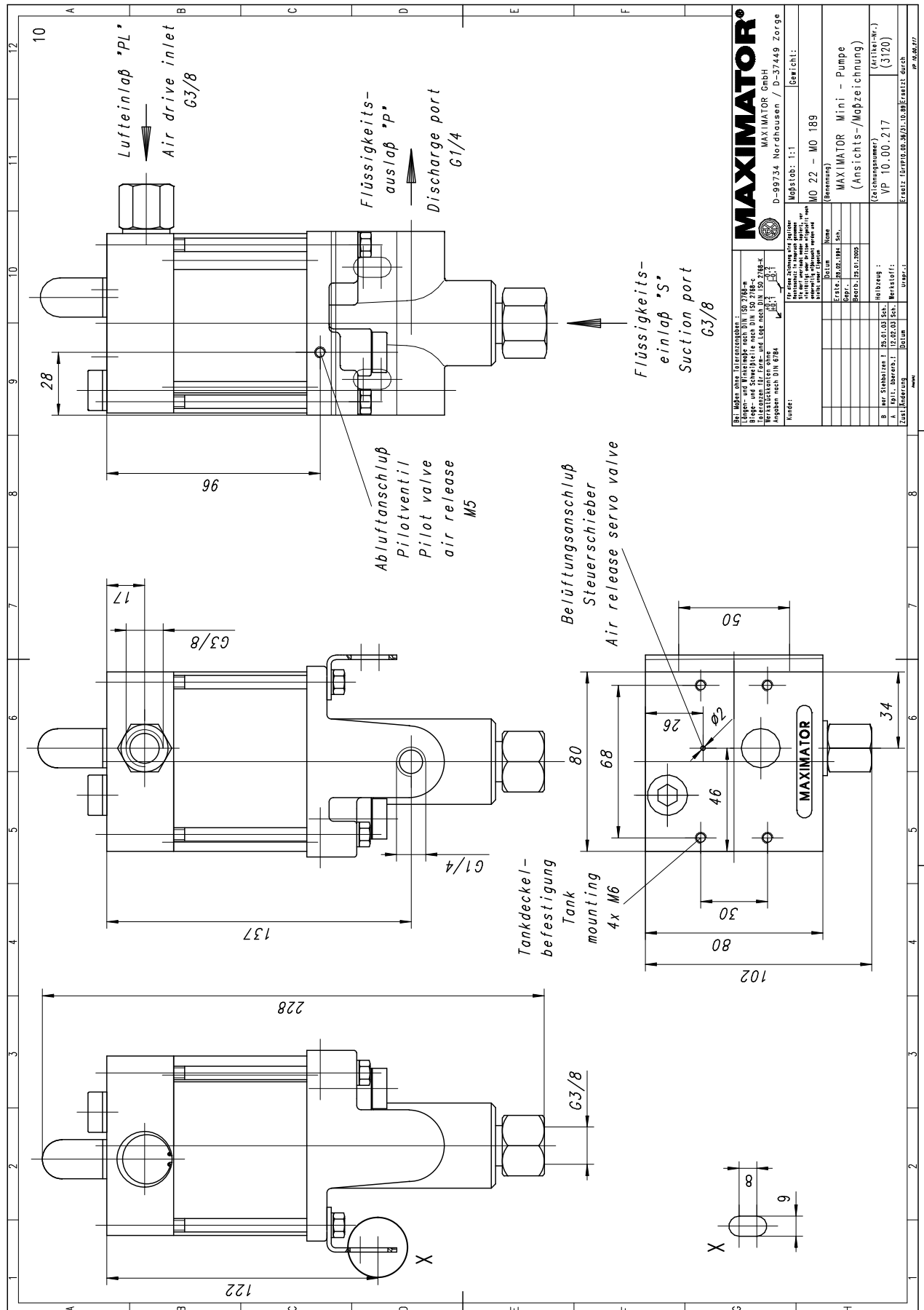
**Please consult factory for more information.** All technical and dimensional information subject to change. All General Terms and Conditions of sale, including limitations of our liability, apply to all products and services sold.

# MAXIMATOR®

## Maximum Pressure.



High Pressure Technology • Testing Equipment  
Hydraulics • Pneumatics





High Pressure Technology • Testing Equipment  
Hydraulics • Pneumatics

### Leistungsdiagramm/Performance Graph M(O)(SF) 37

Prüfflüssigkeit/Test Liquid: Wasser-Öl-Emulsion/Water Oil Emulsion ca. 1 - 10 cst

