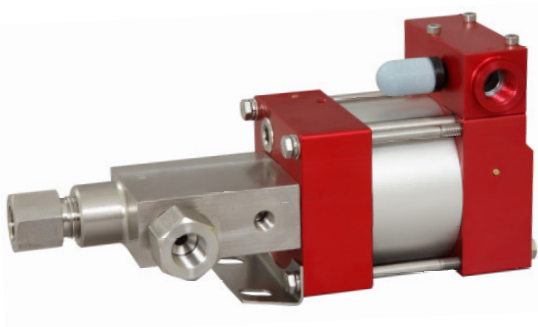


High Pressure Technology • Testing Equipment
Hydraulics • Pneumatics

Technical Data Sheet

MSF111(L)

» Special liquids



MSF111(L)
single acting, single air drive head and
distance piece
(Standard= Bottom inlet)

Technical Data:

Air drive pressure:	1-10 bar / 14,5 - 145psi
Calculated Outlet Pressure at an air drive of 10 bar/145 psi:	1,000 bar/ 14,500 psi
Pressure ratio:	1:130
Displacement volume/double stroke	1.0 cm ³ / 0.06 cu.inch

Connections:

Inlet:	Standard: Bottom Inlet 3/8 BSP
Outlet:	3/8 BSP
Air drive:	3/8 BSP
Maximum operating temperature:	60°C
Net weight:	3.5 kg

Pressure and flow performances, please see enclosed graph.

Wetted materials of construction:

Seal package:	MSF111(L): Filled Teflon (PTFE) Fluorcarbon (V)
Pump Body:	1.4571
Piston:	1.4571
Fittings:	1.4305

Approximate Dimensions:

Height:	247 mm
Depth:	112 mm
Width:	108 mm

Available Options:

Side inlet	MSF111(L)S
Special inlet and outlet ports, i.e. NPT	MSF111(L)-NPT
Special seal material to handle special fluids on request.	

Available Accessories:

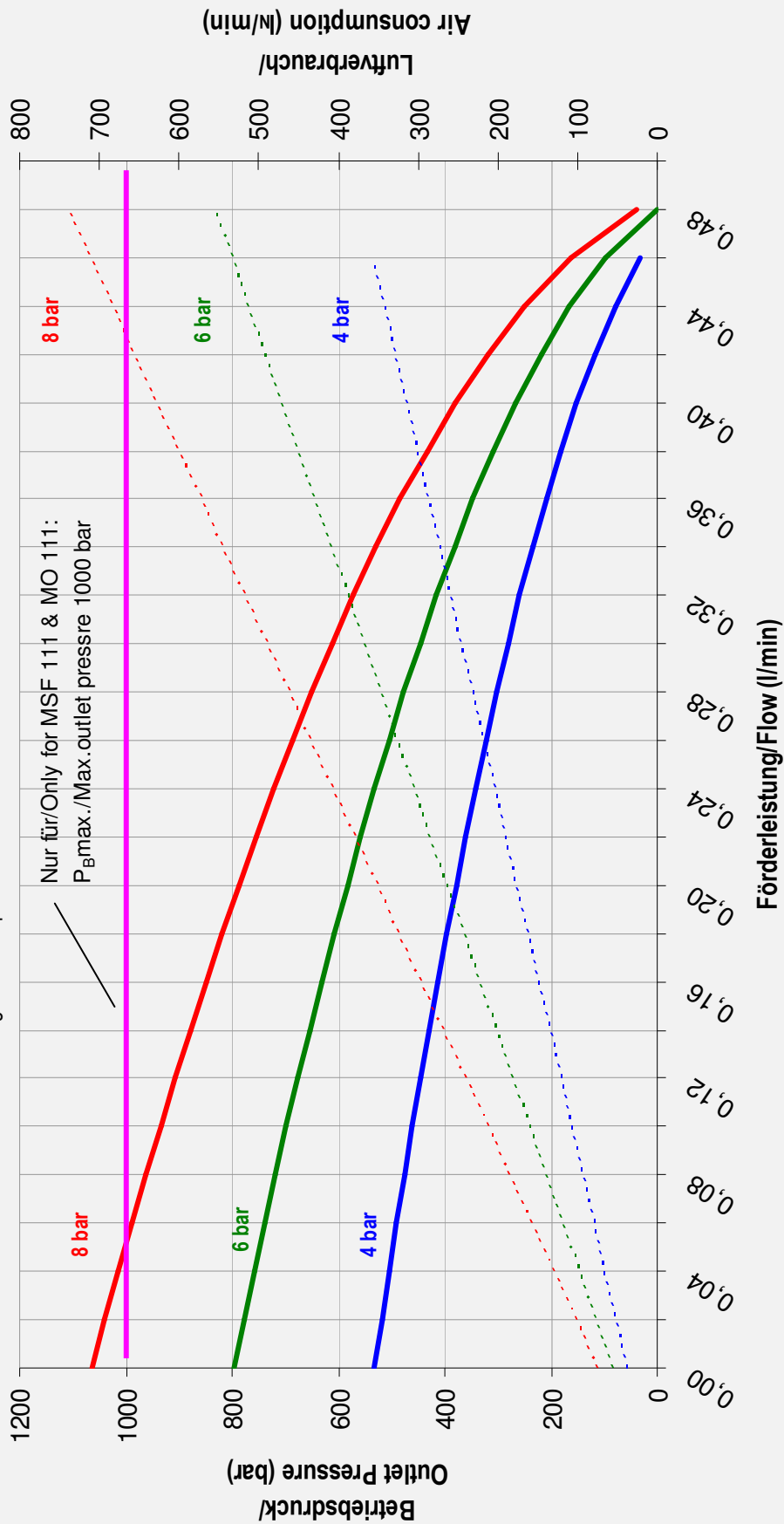
Air control units with filter pressure regulator, control pressure gauge and shut off valve:	MSF111(L) with C1
To protect the pump against excessive outlet pressures or to limit the outlet pressure, a safety valve can be fitted to the air control unit in the air drive line:	MSF111(L) with C1/SVair (The required outlet pressure has to be indicated.)

Please consult factory for more information. All technical and dimensional information subject to change. All General Terms and Conditions of sale, including limitations of our liability, apply to all products and services sold.

Leistungsdiagramm/Performance Graph M(O)(SF) 111

Prüfflüssigkeit/Test Liquid: Wasser-Öl-Emulsion/Water Oil Emulsion ca. 1 - 10 cst

Nur für/Only for MSF 111 & MO 111:
P_Bmax./Max.outlet pressure 1000 bar



- Betriebsdruck bei/Outlet Pressure at 4 bar
- Betriebsdruck bei/Outlet Pressure at 6 bar
- Betriebsdruck bei/Outlet Pressure at 8 bar
- ... Luftverbrauch bei/Air consumption at 4 bar
- ... Luftverbrauch bei/Air consumption at 6 bar
- ... Luftverbrauch bei/Air consumption at 8 bar