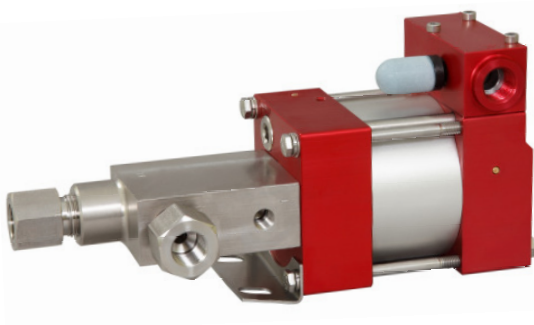


**Technical Data Sheet**

**MSF37(L)**

» Special liquids



MSF37(L)  
single acting, single air drive head and  
distance piece  
(Standard= Bottom inlet)

**Technical Data:**

Air drive pressure:	1-10 bar / 14,5 - 145psi
Calculated Outlet Pressure at an air drive of 10 bar/145 psi:	460 bar/ 6,675 psi
Pressure ratio:	1:46
Displacement volume/double stroke	2.8 cm <sup>3</sup> / 0.17 cu.inch

**Connections:**

Inlet:	Standard: Bottom Inlet 3/8 BSP
Outlet:	3/8 BSP
Air drive:	3/8 BSP
Maximum operating temperature:	60°C
Net weight:	3.5 kg

Pressure and flow performances, please see enclosed graph.

**Wetted materials of construction:**

Seal package:	MSF37(L): Filled Teflon (PTFE) Fluorcarbon (V)
Pump Body:	1.4571
Piston:	1.4571
Fittings:	1.4305

**Approximate Dimensions:**

Height:	247 mm
Depth:	112 mm
Width:	108 mm

**Available Options:**

Side inlet	MSF37(L)S
Special inlet and outlet ports, i.e. NPT	MSF37(L)-NPT
Special seal material to handle special fluids on request.	

**Available Accessories:**

Air control units with filter pressure regulator, control pressure gauge and shut off valve:	MSF37(L) with C1
To protect the pump against excessive outlet pressures or to limit the outlet pressure, a safety valve can be fitted to the air control unit in the air drive line:	MSF37(L) with C1/SVair (The required outlet pressure has to be indicated.)

**Please consult factory for more information.** All technical and dimensional information subject to change. All General Terms and Conditions of sale, including limitations of our liability, apply to all products and services sold.



### Leistungsdiagramm/Performance Graph M(O)(SF) 37

Prüfflüssigkeit/Test Liquid: Wasser-Öl-Emulsion/Water Oil Emulsion ca. 1 - 10 cst

