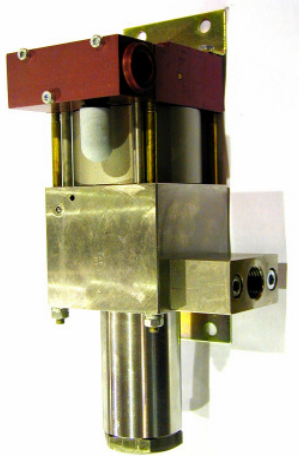


Technical Data Sheet

MSF4(L)

» Special liquids



MSF4(L)
single acting, single air drive head and
distance piece
(Standard= Bottom inlet)

Technical Data:

Air drive pressure: 1-10 bar / 14,5 - 145psi

Calculated Outlet Pressure at an air drive of 10 bar/145 psi: 40 bar/ 580 psi

Pressure ratio: 1:4

Displacement volume/double stroke 30.5 cm³/ 1.86 cu.inch

Connections:

Inlet: Standard: Bottom Inlet 1 BSP

Outlet: 1/2 BSP

Air drive: 3/8 BSP

Maximum operating temperature: 60°C

Net weight: 6.7 kg

Pressure and flow performances, please see enclosed graph.

Wetted materials of construction:

Seal package: MSF4(L): Filled Teflon (PTFE)
Fluorcarbon (V)

Pump Body: 1.4571

Piston: 1.4571

Fittings: 1.4305

Approximate Dimensions:

Height: 248 mm

Depth: 112 mm

Width: 120 mm

Available Options:

Side inlet not available

Special inlet and outlet ports, i.e. NPT MSF4(L)-NPT

Special seal material to handle special fluids on request.

Available Accessories:

Air control units with filter pressure regulator, control pressure gauge and shut off valve: MSF4(L) with C1

To protect the pump against excessive outlet pressures or to limit the outlet pressure, a safety valve MSF4 (L) with C1/SVair (The required outlet pressure has to be indicated.) can be fitted to the air control unit in the air drive line:

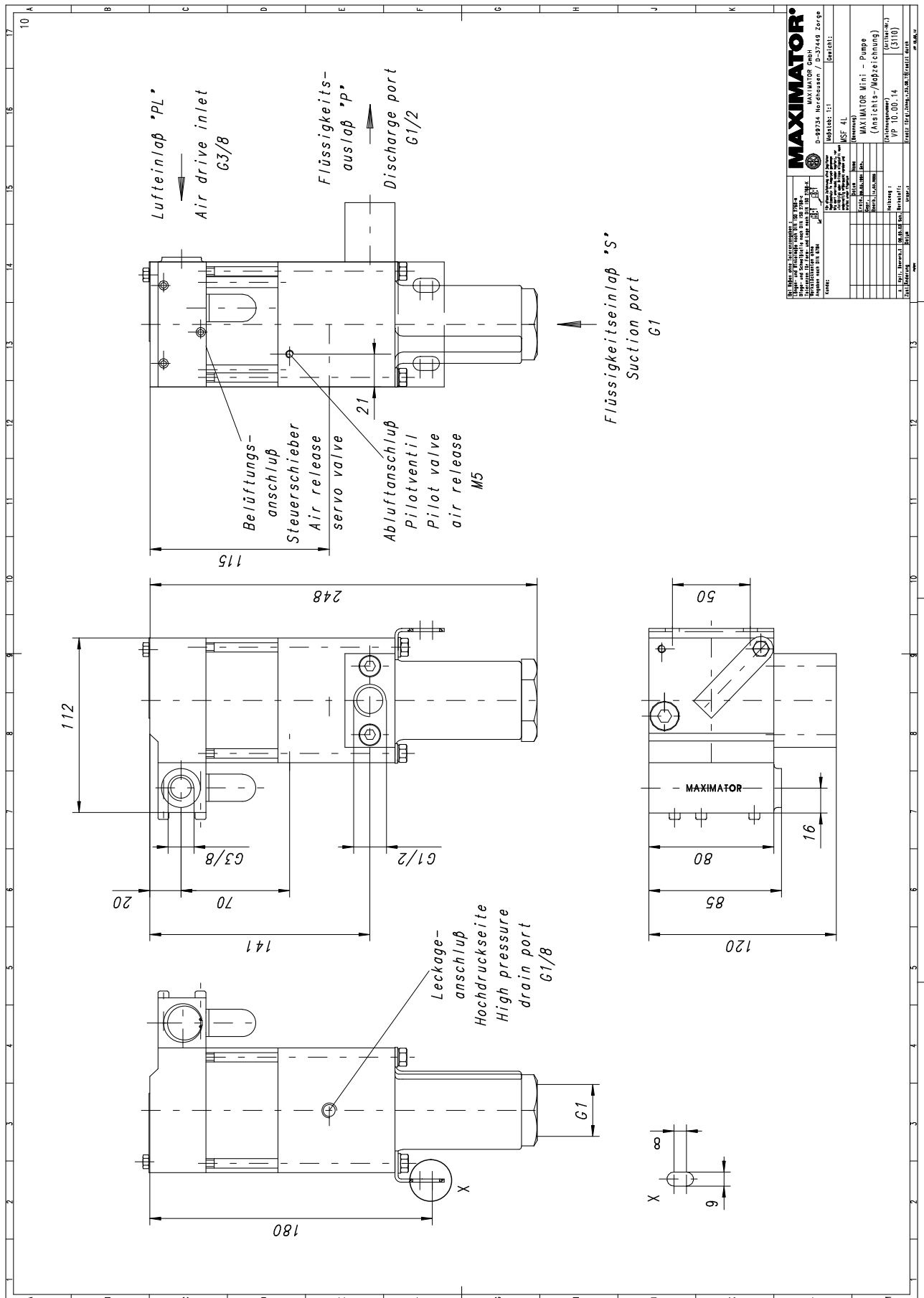
Please consult factory for more information. All technical and dimensional information subject to change. All General Terms and Conditions of sale, including limitations of our liability, apply to all products and services sold.

MAXIMATOR®

Maximum Pressure.



High Pressure Technology • Testing Equipment
Hydraulics • Pneumatics



Leistungsdiagramm/Performance Graph M(O)(SF) 4

Prüfflüssigkeit/Test Liquid: Wasser-Öl-Emulsion/Water Oil Emulsion ca. 1 - 10 cst

