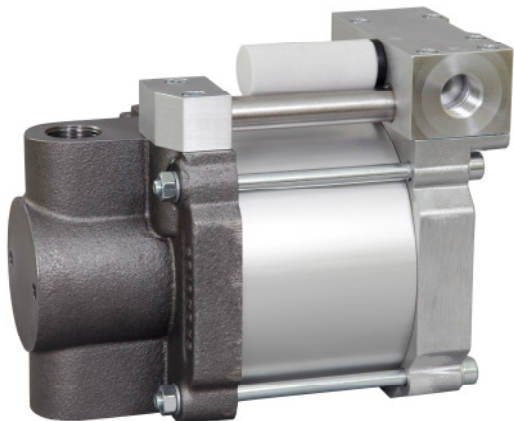


Technical Data Sheet

S150

» Oil service



S150
single acting, single air drive head

Technical Data:

Air drive pressure: 1-10 bar / 14,5 - 145psi

Calculated Outlet Pressure at an air drive of 10 bar/145 psi: 1,000 bar/ 14,500 psi

Pressure ratio: 1:156

Displacement volume/double stroke 3.1 cm³/ 0.19 cu.inch

Connections:

Inlet: 1/2 BSP

Outlet: 3/8 BSP

Air drive: 1/2 BSP

Maximum operating temperature: 60°C

Net weight: 9.1 kg

Pressure and flow performances, please see enclosed graph.

Wetted materials of construction:

Top cap: Aluminium

Air cylinder: Aluminium

Seal package: Polyurethane, NBR

Pump Body: GGG50

HP Piston: 1.4112 (hardened)

Approximate Dimensions:

Height: 221 mm

Depth: 135 mm

Width: 175.5 mm

Available Options:

Special inlet and outlet ports, i.e. NPT S150-NPT

Special seal material to handle special fluids on request.

Available Accessories:

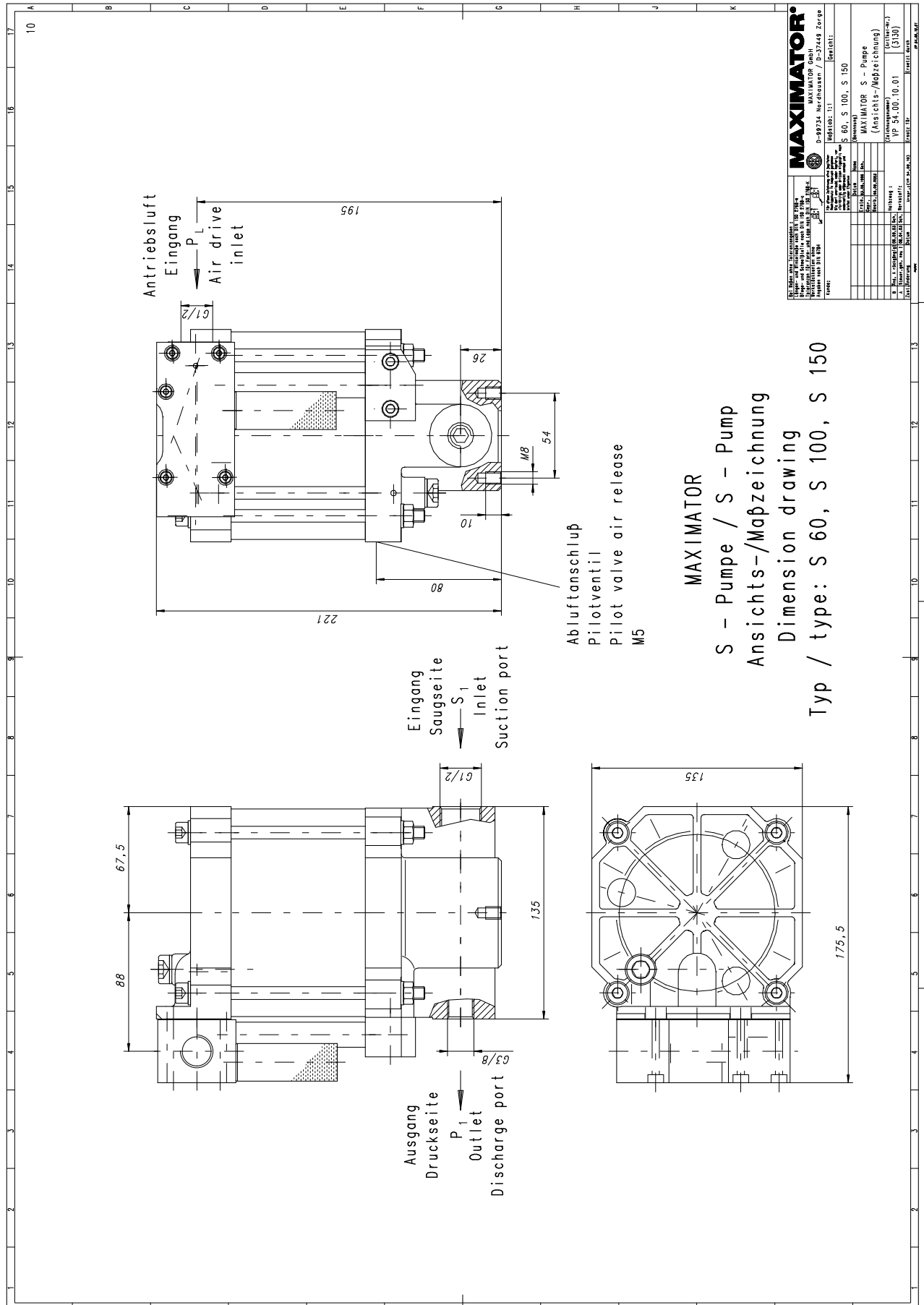
Air control units with filter pressure regulator, control pressure gauge and shut off valve: S150 with C1.5

To protect the pump against excessive outlet pressures or to limit the outlet pressure, a safety valve can be fitted to the air control unit in the air drive line: S150 with C1.5/SVair (The required outlet pressure has to be indicated.)

Please consult factory for more information. All technical and dimensional information subject to change. All General Terms and Conditions of sale, including limitations of our liability, apply to all products and services sold.



High Pressure Technology • Testing Equipment
Hydraulics • Pneumatics

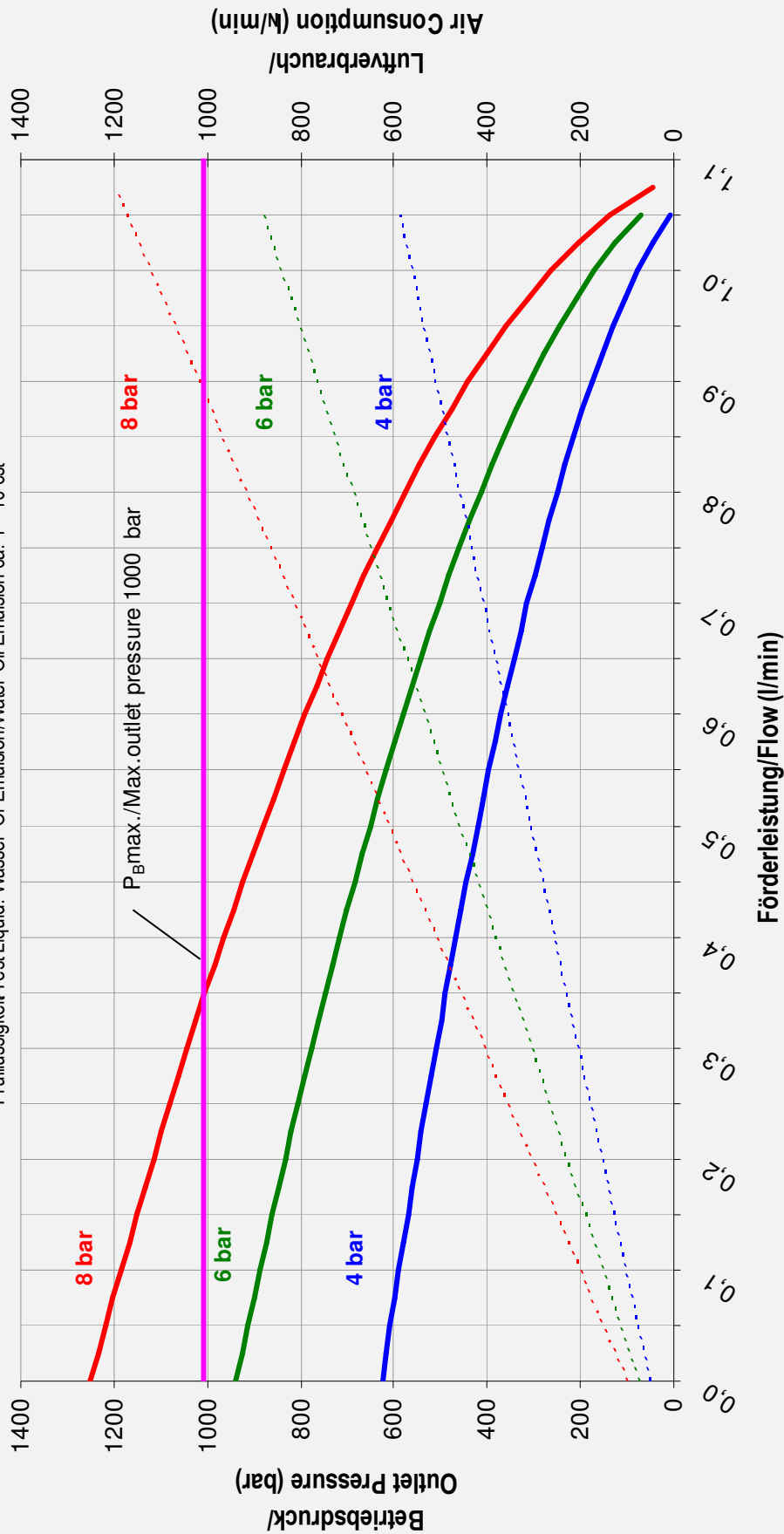




High Pressure Technology • Testing Equipment
Hydraulics • Pneumatics

Leistungsdiagramm/Performance Graph S 150

Prüfflüssigkeit/Test Liquid: Wasser-Öl-Emulsion/Water Oil Emulsion ca. 1 - 10 cst



- Betriebsdruck bei/Outlet Pressure at 4 bar
- Betriebsdruck bei/Outlet Pressure at 8 bar
- Luftverbrauch bei/Air consumption at 4 bar
- Luftverbrauch bei/Air consumption at 6 bar
- Luftverbrauch bei/Air consumption at 8 bar