

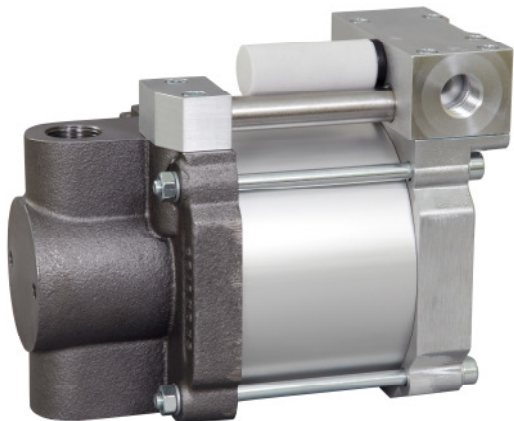


High Pressure Technology • Testing Equipment  
Hydraulics • Pneumatics

### Technical Data Sheet

S25

» Oil service



S25  
single acting, single air drive head

#### Technical Data:

|   |                                    |
|---|------------------------------------|
| Air drive pressure:   | 1-10 bar / 14,5 - 145psi           |
| Calculated Outlet Pressure at an air drive of 10 bar/145 psi: | 250 bar/ 3,625 psi                 |
| Pressure ratio:   | 1:25                               |
| Displacement volume/double stroke                             | 19.6 cm <sup>3</sup> / 1.2 cu.inch |

#### Connections:

|                                |         |
|--------------------------------|---------|
| Inlet:                         | 3/4 BSP |
| Outlet:                        | 3/4 BSP |
| Air drive:                     | 1/2 BSP |
| Maximum operating temperature: | 60°C    |
| Net weight:                    | 9.1 kg  |

Pressure and flow performances, please see enclosed graph.

#### Wetted materials of construction:

|               |                   |
|---------------|-------------------|
| Top cap:      | Aluminium         |
| Air cylinder: | Aluminium         |
| Seal package: | Polyurethane, NBR |
| Pump Body:    | GGG50             |
| HP Piston:    | 1.4112 (hardened) |

#### Approximate Dimensions:

|         |          |
|---------|----------|
| Height: | 221 mm   |
| Depth:  | 135 mm   |
| Width:  | 175.5 mm |

#### Available Options:

|  |         |
|--|---------|
| Special inlet and outlet ports, i.e. NPT                   | S25-NPT |
| Special seal material to handle special fluids on request. |         |

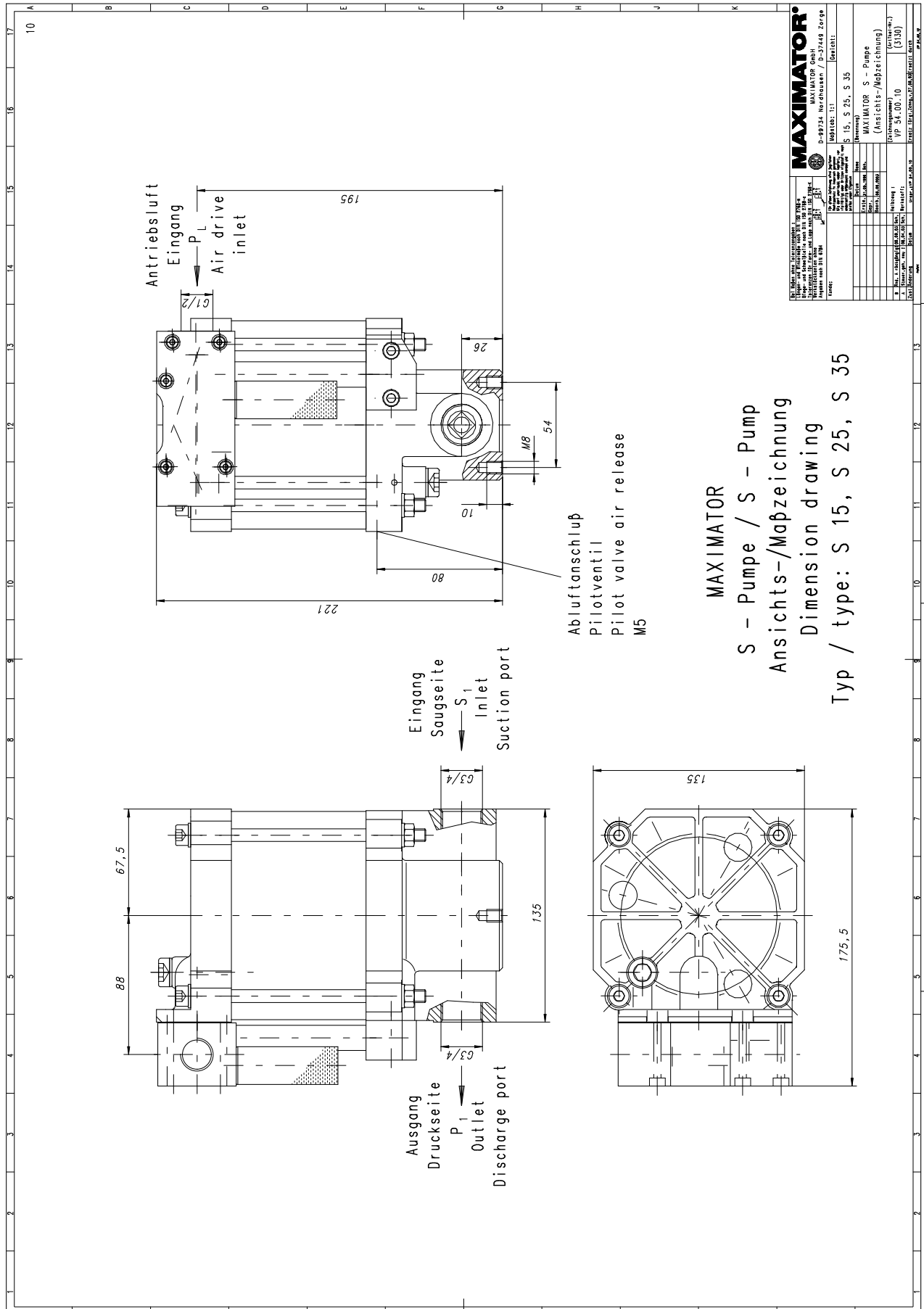
#### Available Accessories:

|   |   |
|---|---|
| Air control units with filter pressure regulator, control pressure gauge and shut off valve:  | S25 with C1.5   |
| To protect the pump against excessive outlet pressures or to limit the outlet pressure, a safety valve can be fitted to the air control unit in the air drive line: | S25 with C1.5/SVair (The required outlet pressure has to be indicated.) |

**Please consult factory for more information.** All technical and dimensional information subject to change. All General Terms and Conditions of sale, including limitations of our liability, apply to all products and services sold.



High Pressure Technology • Testing Equipment  
Hydraulics • Pneumatics



### Leistungsdiagramm/Performance Graph S 25

Prüfflüssigkeit/Test Liquid: Wasser-Öl-Emulsion/Water Oil Emulsion ca. 1 - 10 cst

