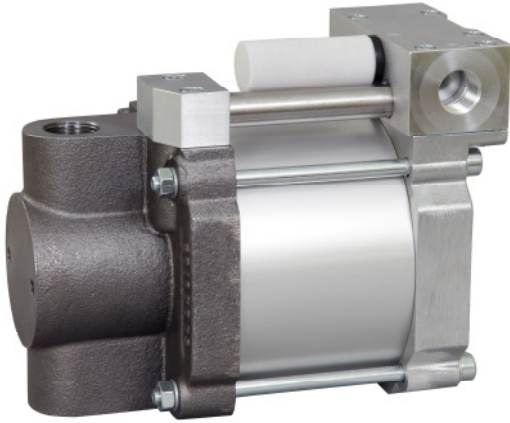


High Pressure Technology • Testing Equipment  
Hydraulics • Pneumatics

### Technical Data Sheet

S35

» Oil service



S35  
single acting, single air drive head

#### Technical Data:

Air drive pressure: 1-10 bar / 14,5 - 145psi

Calculated Outlet Pressure at an air drive of 10 bar/145 psi: 390 bar/ 5,655 psi

Pressure ratio: 1:39

Displacement volume/double stroke 12.6 cm<sup>3</sup>/ 0.77 cu.inch

#### Connections:

Inlet: 3/4 BSP

Outlet: 3/4 BSP

Air drive: 1/2 BSP

Maximum operating temperature: 60°C

Net weight: 9.1 kg

Pressure and flow performances, please see enclosed graph.

#### Wetted materials of construction:

Top cap: Aluminium

Air cylinder: Aluminium

Seal package: Polyurethane, Buna N

Pump Body: GGG50

HP Piston: 1.4112 (hardened)

#### Approximate Dimensions:

Height: 221 mm

Depth: 135 mm

Width: 175.5 mm

#### Available Options:

Special inlet and outlet ports, i.e. NPT S35-NPT

Special seal material to handle special fluids on request.

#### Available Accessories:

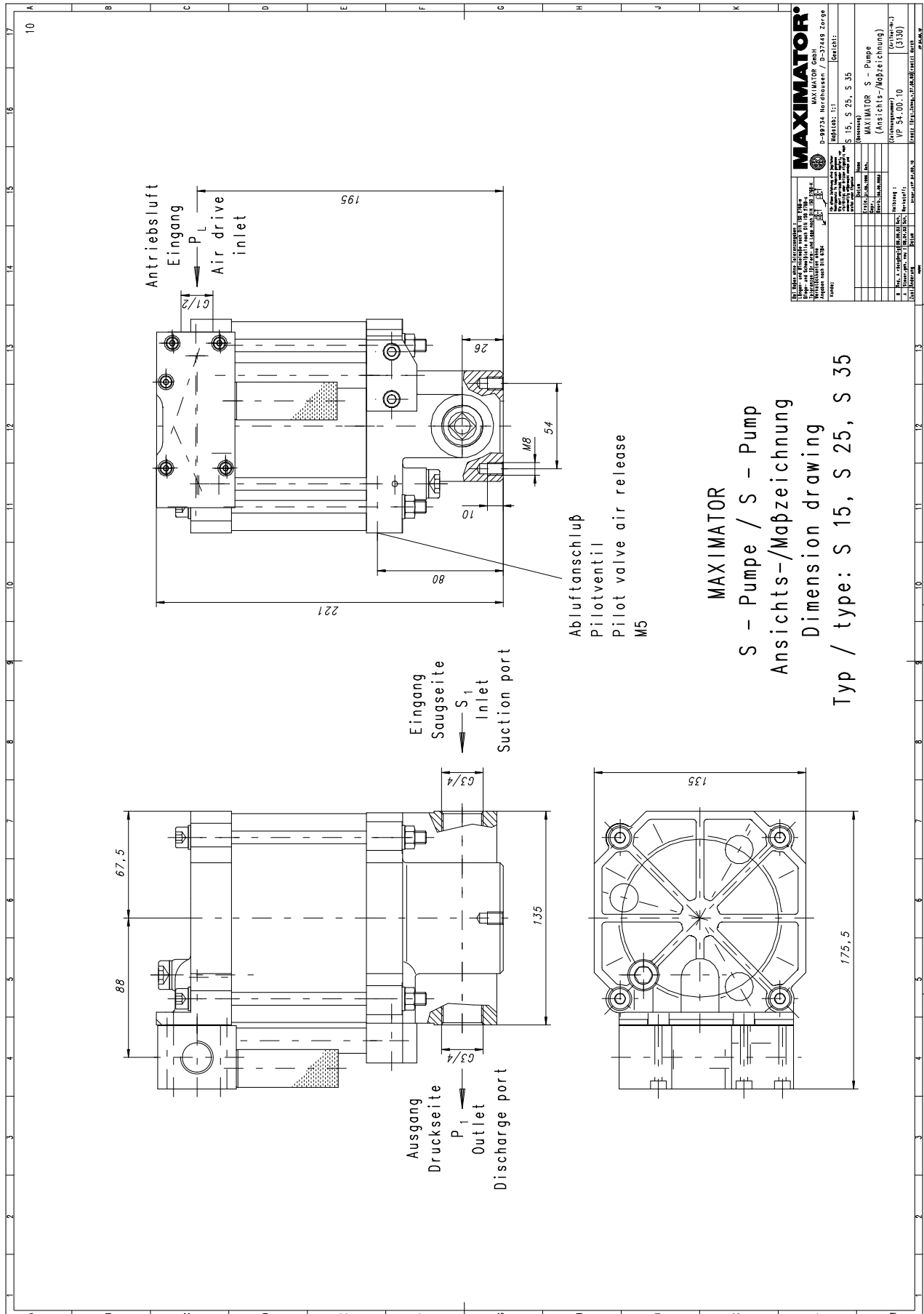
Air control units with filter pressure regulator, control pressure gauge and shut off valve: S35 with C1.5

To protect the pump against excessive outlet pressures or to limit the outlet pressure, a safety valve can be fitted to the air control unit in the air drive line: S35 with C1.5/SVair (The required outlet pressure has to be indicated.)

**Please consult factory for more information.** All technical and dimensional information subject to change. All General Terms and Conditions of sale, including limitations of our liability, apply to all products and services sold.



High Pressure Technology • Testing Equipment  
Hydraulics • Pneumatics



### Leistungsdiagramm/Performance Graph S 35

Prüfflüssigkeit/Test Liquid: Wasser-Öl-Emulsion/Water Oil Emulsion ca. 1 - 10 cst

